

Capital Asset Advisory Committee 2018 Capital Improvement Program Financial Status as of September 15, 2021

September 16, 2021

2018 CAPITAL IMPROVEMENT PROGRAM – FINANCIAL STATUS 9/15/2021

Forecasted Revenue

First Issuance

\$	326,490,000	Bond Issuance
\$	50,165,349	Premium on First Bond Issuance
\$	(1,655,349)	Issuance Costs
\$	11,774,997	Interest Through July 2021, net of bank fees
\$	386,774,997	

Second Issuance

\$	240,510,000	Bond Issuance
\$	68,309,148	Premium on First Bond Issuance
\$	(1,293,367)	Issuance Costs
\$	157,294	Interest Through June 2021, net of bank fees
\$	307,683,075	

Capital Transfer

\$	72,253,663	FY 2019, 2020, 2021 & 2022 Transfers from General Fund less COP Principal & Interest
\$	62,701,443	Forecasted FY 2023, 2024, 2025 Transfers from General Fund Less COP Principal & Interest
\$	134,955,106	

TBD Future Interest Earnings

\$ 829,413,178 Preliminary Revenue

2018 CAPITAL IMPROVEMENT PROGRAM – FINANCIAL STATUS 9/15/2021

Expenditures

As of September 15, 2021

As of August 15, 2021

\$ 356,026,795	All expenditures to date, first issuance		
\$ 43,536,563	All expenditures to date - second issuance		
\$ 399,563,358	Total Expenditures	\$379,288,222	Total Expended - All projects
\$ 24,577,167	All encumbrances, first issuance		
\$ 80,169,266	All encumbrances, second issuance		
\$ 104,746,433	Total Encumbrances	\$85,476,800	Total Encumbered - All projects

First issuance: 90% of bond proceeds spent (net of retainage)

Second issuance: 14% of bond proceeds spent (net of retainage)

Two Projects on 10/4/2021 BOE Agenda Approximate Value \$16,733,050

Charter

\$ 49,206,898	Total Expended - Charter	\$48,633,629	Total Expended - Charter
\$ 1,864,091	Total Encumbered - Charter	\$1,624,948	Total Encumbered - Charter

2018 CAPITAL IMPROVEMENT PROGRAM – FINANCIAL STATUS 9/15/2021

Work in Progress & Completion Dates

		Events	
Alameda Addition / Renovation	8/22		
Pomona HS Addition/Renovation	8/22		
Marshdale ES Replacement	8/22		
D'Evelyn ES Addition / Renovation	8/22		
Jefferson Jr./Sr. HS Addition / Renovation	8/21	TBD	
Manning School Addition	8/21	TBD	
Jeffco Open School	1/23	TBD	To BOE 10/4
Ralston Valley HS Addition/Remodel	1/23	TBD	To BOE 10/4
Prospect Valley ES Replacement	1/23	9/24	
Parmalee ES Addition / Renovation	8/21	9/29	Tentative
Foster ES Addition / Renovation	8/21	TBD	
Warren Tech South	8/21	9/24	
Lumberg ES Addition / Renovation	8/21	TBD	
Artificial Turf & Tracks @ 4 HS	10/21		
LED Replacement Phase II 11 Sites	9/21		
4 Playgrounds	10/21		

2018 CAPITAL IMPROVEMENT PROGRAM – FINANCIAL STATUS 9/15/2021

In Design









Powderhorn Addition/Renovation	Bid 6/15	\$ 4,690,000
Prospect Valley ES Replacement	Bid 6/25	\$17,664,000
Standley Lake HS Addition/Renovation	Bid 7/15	\$ 6,427,300
Evergreen MS Renovation	Bid 7/29	\$ 5,347,900
Evergreen HS Renovation	GMP 8/15	\$ 8,215,738
Jeffco Open School Addition/Renovation	Bid 8/26	\$ 9,997,000
Ralston Valley HS Addition/Renovation	Bid 9/9	\$ 6,736,050

2018 CAPITAL IMPROVEMENT PROGRAM – FINANCIAL STATUS 9/15/2021

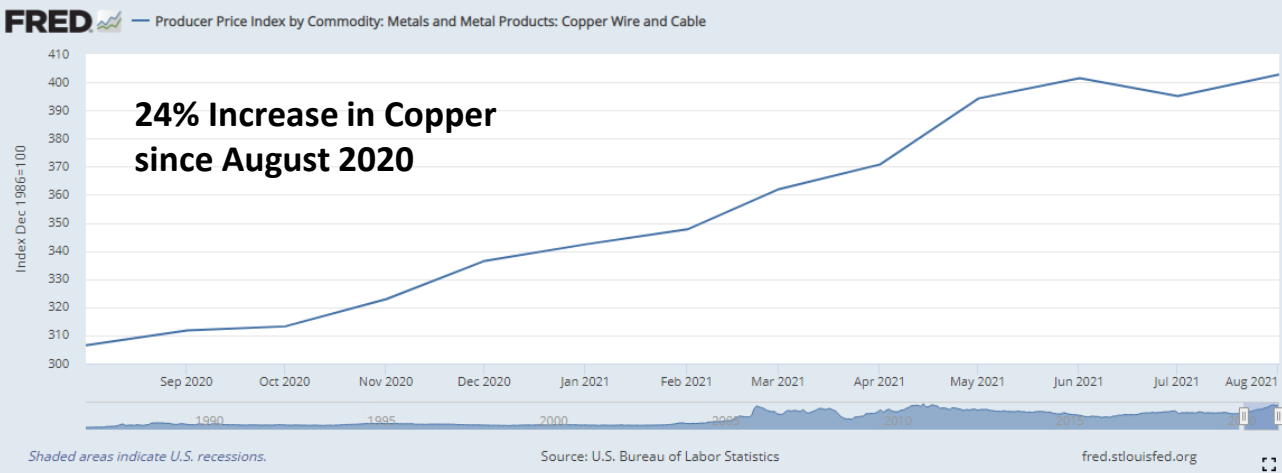
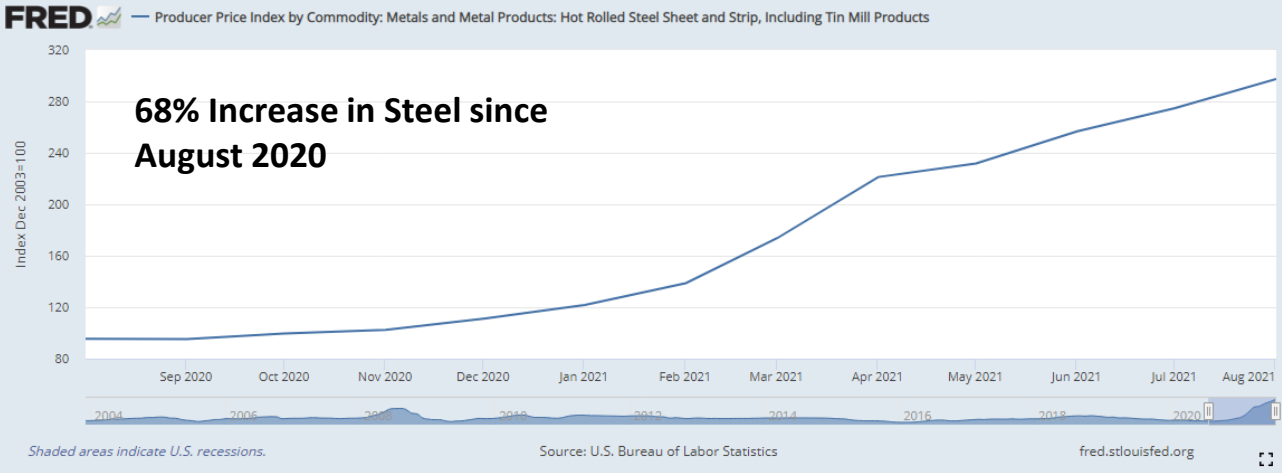
2020 Summer Bid Results								
Project	Budget	Bid	Budget Variance (Over)/Under	Over/ (Under) as %	Project Contingency Contribution	To / (From) Unallocated Reserves	3% Minimum Construction Contingency	Revised Project Cost
Prospect Valley Replacement	\$16,959,186	\$17,664,000	(\$704,814)	4%	\$133,889	(\$570,925)	\$529,920	\$18,193,920
Marshdale Replacement	\$16,500,000	\$15,548,000	\$952,000	-6%	\$0	\$952,000		\$15,548,000
Standley Lake HS Efficiency &	\$6,182,819	\$6,490,600	(\$307,781)	5%	\$307,781	\$0		\$6,490,600
Ralston Valley HS Addition & Renovation	\$6,444,644	\$6,736,050	(\$291,406)	4%	\$0	(\$291,406)	\$202,082	\$6,938,132
Jeffco Open Addition	\$7,376,021	\$9,997,000	(\$2,620,979)	26%	\$970,029	(\$1,650,950)	\$299,910	\$10,296,910
Powderhorn ES Addition &	\$4,482,949	\$4,690,000	(\$207,051)	4%	\$207,051	\$0		\$4,690,000
Evergreen MS Addition &	\$5,906,185	\$5,347,900	\$558,285	-10%	\$0	\$558,285		\$5,347,900
Evergreen HS Efficiency & Future Ready	\$7,764,839	\$8,215,738	(\$450,899)	5%	\$450,899	\$0		\$8,215,738
	\$71,616,643	\$74,689,288	(\$3,072,645)	4%	\$2,069,649	(\$1,002,996)	\$1,031,912	\$75,721,200

2018 CAPITAL IMPROVEMENT PROGRAM – FINANCIAL STATUS 9/15/2021

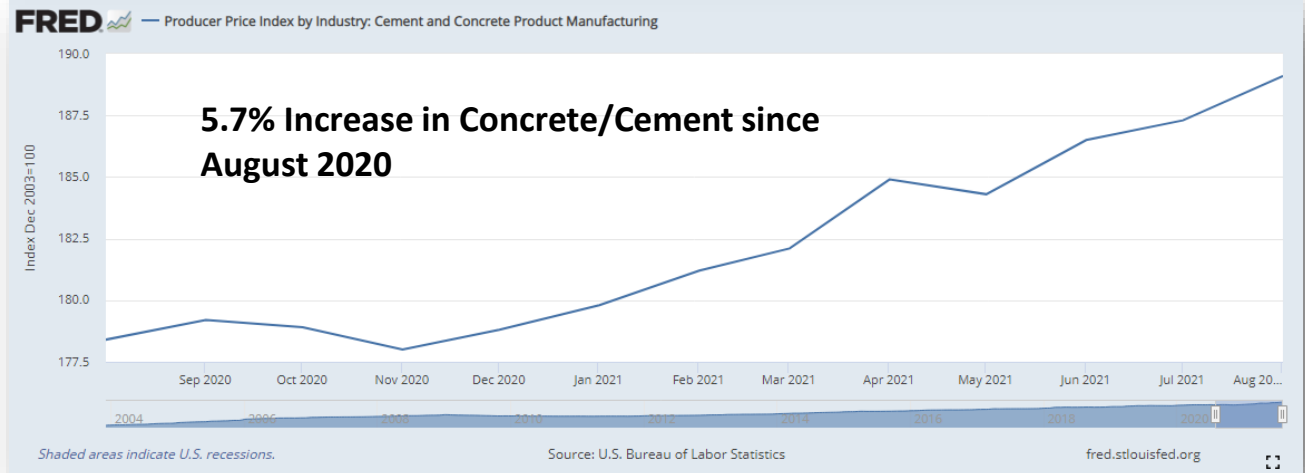
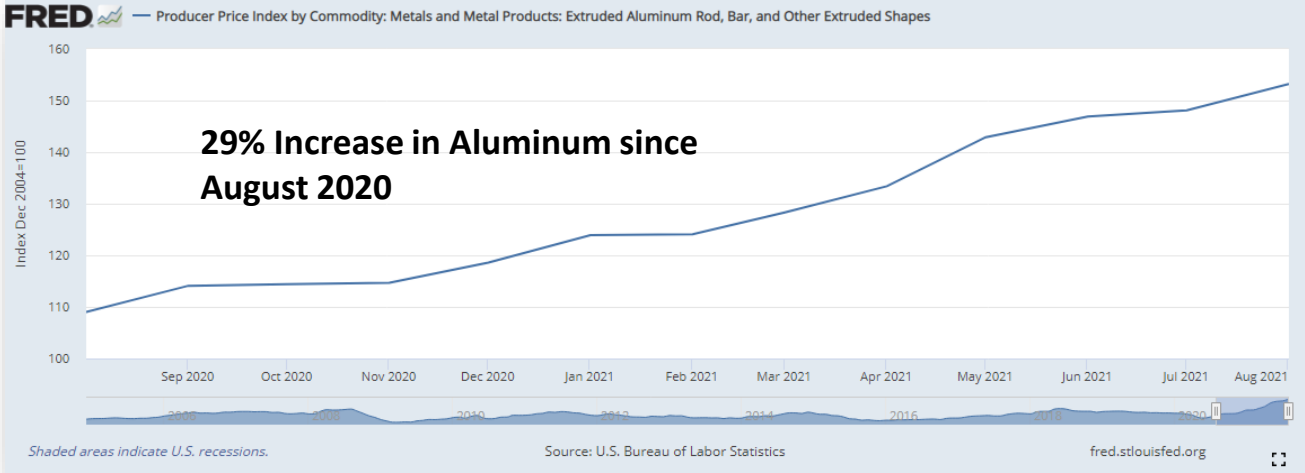
Roofing Products & Accessories

Updated 7/13/21	 CARLISLE CONSTRUCTION MATERIALS	 Firestone Firestone Building Products	 GAF	 JM Johns Manville YTD Increases	 Sarnafil	 SOPREMA Sep 01, 2021	 OMG WE MAKE IT HAPPEN	 TRUFast
	YTD Increases	YTD Increases	YTD Increases	YTD Increases	YTD Increases*	Sep 01, 2021	YTD Increases	YTD Increases
EPDM	26%	Up to 24%	N/A	15-19%	N/A	N/A	N/A	N/A
TPO	21%	Up to 24%	13%	15-19%*	N/A	N/A	N/A	N/A
PVC	20%	Up to 31%	12%	13-15%	12-13%	10%	N/A	N/A
Metal Insulation/Seam Plates	50-60%	Up to 65%	30%	25%	17%	10%	30-40%	18-23%
Metal Base Sheet & ASAP Fasteners	55%	Up to 65%	25%	25%	17%	10%	30-40%	18-23%
Induction Plates	50%	Up to 65%	20%	25%	17%	10%	30-40%	18%
All Other Fasteners	25%	Up to 65%	15%	25%	17%	10%	30-40%	13-16%
Low Rise Foam Adhesives	50%*	35-130%+*	20%	17-100%+**	5%**	10%	35-45%*	13%
Bonding Adhesives	20%	15-45%**	20%	17-33%***	13%	10%	35-45%*	13%
All Other Products/Accessories	20-50%**	40-90%***	10%	15-25%****	13-25%***	10%	30-40%	13%
Polyiso Insulation (Flat/Taper)	27-30%	Up to 27%	15%	15-19%*		20-22%*	N/A	N/A
	* 25% surcharge included ** 20% on non-metal accessories; 50% metal Freight surcharge increased \$105 for ≤ 100 miles; \$100 for > 100 miles. Total surcharge with fuel now \$250/\$400 for under/over 100 miles	*Surcharge of 30%-100% included **30% surcharge included *** 70%+ on metal roofing accessories; 90%+ on specialty accessories Freight surcharge increased to \$425/truck	Freight surcharge increased to \$450 effective 5/17	*5-7% of total increase not effective until Jan. '22 **Surcharge of 30%-100% included ***16% surcharge on PVC adhesive/ sprayable bonding included **** 25% on PVC & TPO coated metal products & other select items	*Supply surcharge on all products except insulation; increased from 4% to 5% on 8/1 ** Changed list price, resulting increase unknown ***20% increase on metal accessories	*35% on Sopraboard	*Includes 30% surcharge	

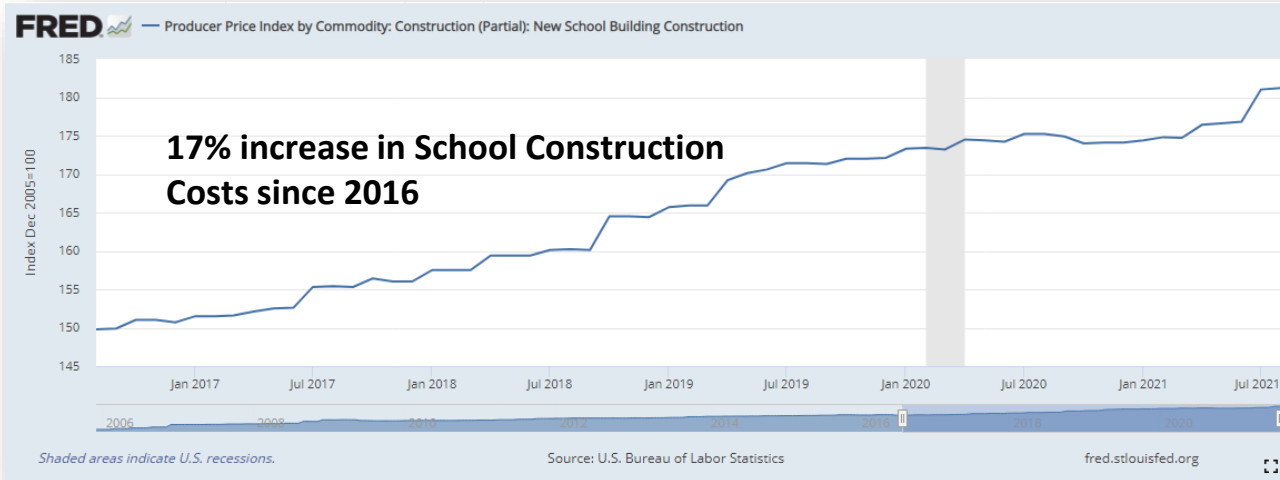
2018 CAPITAL IMPROVEMENT PROGRAM – FINANCIAL STATUS 8/15/2021



2018 CAPITAL IMPROVEMENT PROGRAM – FINANCIAL STATUS 8/15/2021



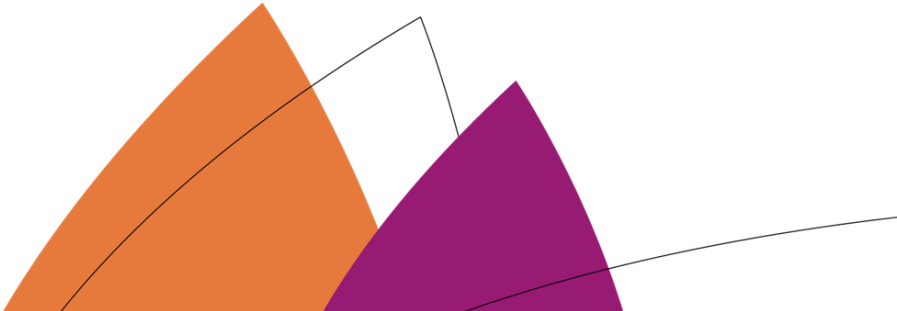
2018 CAPITAL IMPROVEMENT PROGRAM – FINANCIAL STATUS 9/15/2021





CAAC Design and Construction Update

9-16-2021



2021 Projects

Foster ES – 1 Story – 7 Classroom Addition Larson Incitti – GC GE Johnson

Construction
Utility Issues



Foster ES – 1 Story – 7 Classroom Addition Larson Incitti – GC GE Johnson

Construction



Foster ES – 1 Story – 7 Classroom Addition Larson Incitti – GC GE Johnson



Brady - Efficiency Future Ready Alan Ford – GC Himmelman

Construction



DW Tracks & Turf Fields HCM – CMGC Saunders

Construction

Jefferson 11/05/21



D'Evelyn 10/18/21



DW Tracks & Turf Fields HCM – CMGC Saunders

Construction



Alameda HS 11/08/21



Wheat Ridge HS 10/26/21

DW LED 2021 – Ackerman – CMGC McKinstry

Construction



1. 11/17 Edgewater ES
2. 10/20 Elk Creek ES
3. 11/17 Emory ES
4. **Kyffin ES**
5. 11/17 Red Rocks ES
6. **Shaffer ES**
7. 10/6 Stevens ES
8. **Stony Creek ES**
9. **Thomson ES**
10. 10/6 Warder ES
11. 10/20 West Jefferson ES

DW – Playgrounds I – Group A Kyffin ES, Red Rocks ES, Peck ES Design Concepts – T2

Construction

Peck ES

Installation



Kyffin ES

Late September



Red Rocks ES

Late September



DW – Playgrounds I – Group B
Warder ES, Secret ES,
Thomson ES
Design Concepts – T2



Secret ES



Thomson

Play equipment in CO
Install after Peck



Warder ES

DW – Playgrounds – Normandy ES, Shaffer ES, Elk Creek ES

Construction
Install Early
October

Lime Green – Arrow J



2021/22 Projects

New Buildings & Additions

Alameda HS – Addition WOLD – CMGC Phipps

Construction



Alameda HS – Addition WOLD – CMGC Phipps

Construction



Pomona HS – Aux Gym Addition Sybazz – CMGC Saunders

Construction



Marshdale ES - Replacement HCM – GC GH Phipps

Construction



D'Evelyn – 8 CR Addition HCM – GC Himmelman

Construction



Powderhorn ES - Addition Hollis & Miller – Himmelman

Construction



Prospect Valley ES - Replacement MOA – GH Phipps

Construction



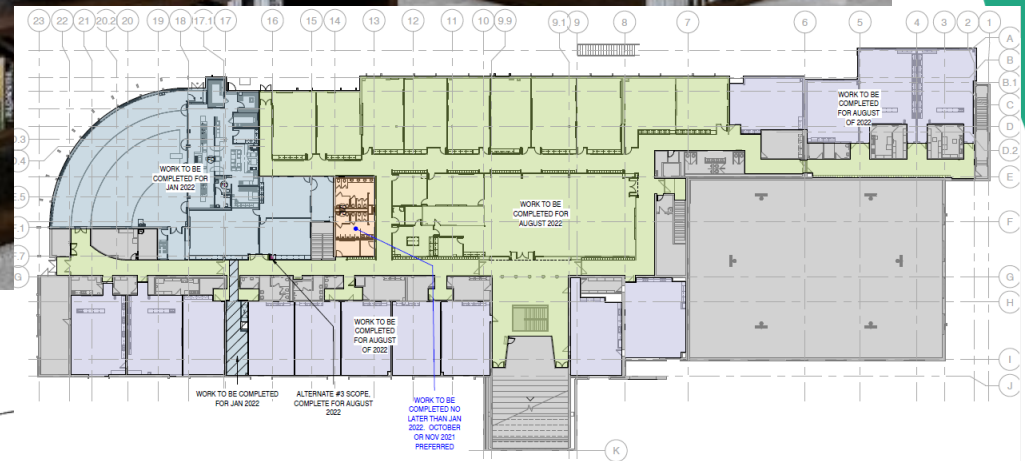
Standley Lake HS - Addition Cannon – FCI Constructors

Construction



Evergreen MS Efficiency & Future Ready Construction

AMD – Haselden



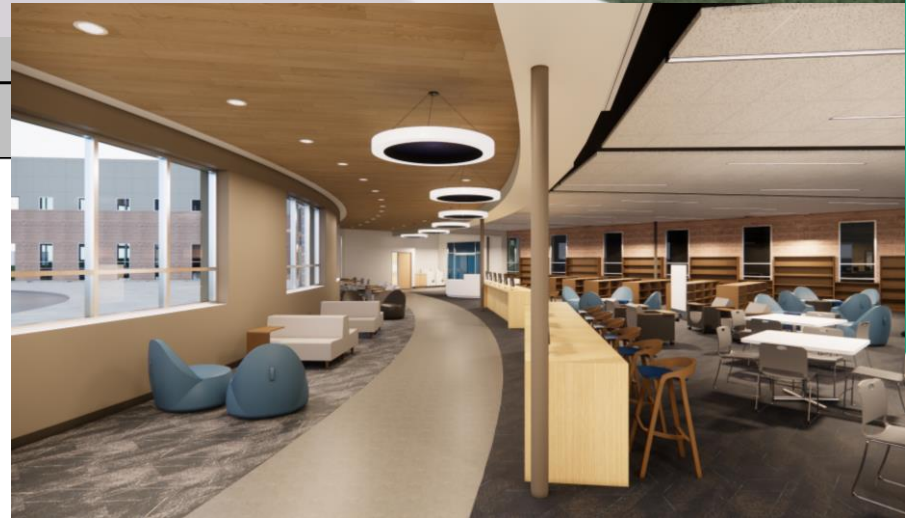
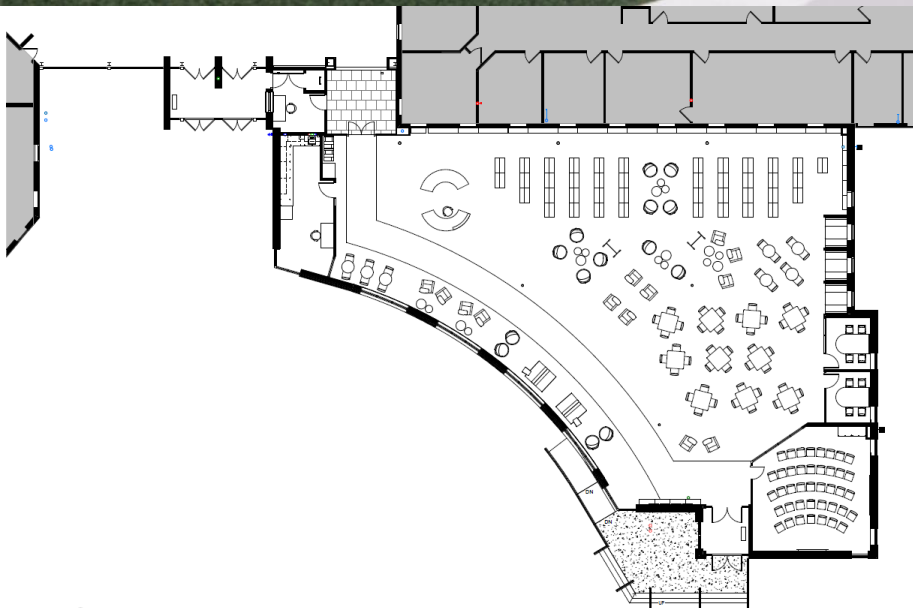
Evergreen HS Efficiency Future Ready DLR – CMGC JHL

Construction



Ralston Valley HS - Addition EUA - Himmelman

Construction



2022

44 - Efficiency

Future Ready

&

DW projects

2022 Projects

Location	Articulation	Sched	Type	Description	A/E	Project Manager	Possible Replacement
Mortensen	Chatfield	9/1/21	ES	Efficiency & Future Ready	OZ	Bernadette Kelly	
Shaffer	Chatfield	9/1/21	ES	Efficiency & Future Ready	OZ	Bernadette Kelly	
Stony Creek	Chatfield	9/1/21	ES	Efficiency & Future Ready	OZ	Bernadette Kelly	
DW Playground 2022-I	JDW	9/1/21	DW	4 Schools - Peiffer, Governor's Ranch, Mt. Carbon, Glennon Heights	Design Concepts / Lime Green	Bernadette Kelly	
DW Playground 2022-II	JDW	9/1/21	DW	3 Schools - Campbell, Swanson, Fairmount	Design Concepts / Lime Green	Bernadette Kelly	
DW LED Lighting 2022	JDW	9/1/21	DW	13 Schools - Lawrence, Brady, Bradford North, Bradford South, Ute Meadows, Leawood, Normandy, Rooney Ranch, Creighton MS, Moore MS, Weber ES, Meiklejohn, West Woods	Ackerman	Bill Thaemert	
DW Paving 2022	JDW	9/1/21	DW	5 Schools - Campbell, Peiffer, S Lakewood, Little, Falcon Bluffs	JVA	Bill Thaemert	
Creighton MS	Lakewood	9/1/21	MS	Efficiency & Future Ready	Larson Incitti	Danelle Berzoza	Replaced Oberon
Peck	Arvada	9/1/21	ES	Efficiency & Future Ready	Larson Incitti	Danelle Berzoza	
Secrest	Arvada	9/1/21	ES	Efficiency & Future Ready	Larson Incitti	Danelle Berzoza	
DW Elevator Upgrades 2022	JDW	9/1/21	DW	Elevator Upgrades 2022	Kone	David Curnow	
DW Modular Bldg Removal 2022	JDW	9/1/21	DW	Modular Bldg Removal 2022	In House	David Curnow	
Long View HS	OPT	9/1/21	ES	Efficiency & Future Ready	RTA	Doug Cooper	
Shelton	Golden	9/1/21	ES	Efficiency & Future Ready	RTA	Doug Cooper	
Bear Creek High	Bear Creek	9/1/21	HS	Efficiency & Future Ready	MOA	Ed Huszcza	Replaced Edgewater
Blue Heron	Dakota Ridge	9/1/21	ES	Efficiency & Future Ready	MOA	Ed Huszcza	
Colorow	Dakota Ridge	9/1/21	es	Efficiency & Future Ready	MOA	Ed Huszcza	
Lakewood High	Lakewood	9/1/21	HS	Efficiency & Future Ready	HCM	Hilary Porter	Replaced Molholm
Mt Evans	OELS	9/1/21	OELS	Efficiency & Future Ready	HCM	Hilary Porter	
Windy Peak	OELS	9/1/21	OELS	Efficiency & Future Ready	HCM	Hilary Porter	
DW Mechanical 2022	JDW	9/1/21	DW	Campbell, Fairmount, Falcon bluffs MS, Little, Van Arsdale	Columbine Engineering	Kimber Preece	
North Arvada MS	Arvada	9/1/21	MS	Efficiency & Future Ready	Eidos	Maggie Anderson	
Slater Elementary	Lakewood	9/1/21	ES	Efficiency & Future Ready	Eidos	Maggie Anderson	
Wheat Ridge HS	Wheat Ridge	9/1/21	HS	Efficiency & Future Ready + Turf Replacement	Eidos	Maggie Anderson	
Wilmore Davis	Wheat Ridge	9/1/21	ES	Efficiency & Future Ready	Eidos	Maggie Anderson	

2022 Projects

Location	Articulation	Sched	Type	Description	A/E	Project Manager	Possible Replacement
Emory	Alameda	9/1/21	ES	Efficiency & Future Ready	Treanor HL	Pam Grover	
Red Rocks	Bear Creek	9/1/21	ES	Efficiency & Future Ready	Treanor HL	Pam Grover	
Westgate	Bear Creek	9/1/21	ES	Efficiency & Future Ready	Treanor HL	Pam Grover	
DW Flooring 2022-II	JDW	9/1/21	DW	7 Schools - Swanson, Glennon Heights, S Lakewood, Little, Parr, Van Arsdale, Pennington	Treanor HL	Pam Grover	
Awest HS	Awest	9/1/21	HS	Efficiency & Future Ready	LOA	Sam Miller	
Mandalay	Standley Lake	9/1/21	ES	Efficiency & Future Ready	RB+B	Sam Miller	
Warder	Pomona	9/1/21	ES	Efficiency & Future Ready	RB+B	Sam Miller	
Warren OTC North	Awest	9/1/21	OTC	Efficiency & Future Ready	LOA	Sam Miller	
Bergan Valley	Evergreen	9/1/21	ES	Efficiency & Future Ready	H&M / BVH / EUA	Ted Hagan	
Elk Creek	Conifer	9/1/21	ES	Efficiency & Future Ready	H&M / BVH / EUA	Ted Hagan	
Golden High	Golden	9/1/21	HS	Efficiency & Future Ready	H&M / BVH / EUA	Ted Hagan	Replaced Bergan Meadow
Mitchell	Golden	9/1/21	ES	Efficiency & Future Ready	H&M / BVH / EUA	Ted Hagan	
West Jeff	Conifer	9/1/21	ES	Efficiency & Future Ready	H&M / BVH / EUA	Ted Hagan	
Green Mountain	Green Mtn	9/1/21	ES	Efficiency & Future Ready	Sybazz	Troy Antill	
Stevens WR 5-8	Wheat Ridge	9/1/21	ES	Efficiency & Future Ready	Sybazz	Troy Antill	
Thomson	Arvada	9/1/21	ES	Efficiency & Future Ready	Sybazz/ Intergroup	Troy Antill	
DW Flooring 2022-I	JDW	9/1/21	DW	7 Schools - Dear Creek MS, Falcon Bluffs MS, Summit Ridge MS, Peiffer, Governor's Ranch, Mt Carbon, Rooney Ranch	Sybazz	Troy Antill	
DW Roofing 2022	JDW	9/1/21	DW	5 schools - Summit Ridge MS, Campbell, Fairmount, S Lakewood, Little, Parr, Pennington	Cave, WJE, SRDK, Roof Tech	Troy Antill	
DW Security Glass 2022	JDW	9/1/21	DW	11 schools - Swanson, Awest, Campbell, Fairmount, BCK8, Summit Ridge MS, Glennon Heights, S Lakewood, Little, Parr, Pennington	In House	Troy Antill	

Next Meeting 10/21/21